

Construction Weekly Update

Week of August 10th, 2020

School District of Manawa



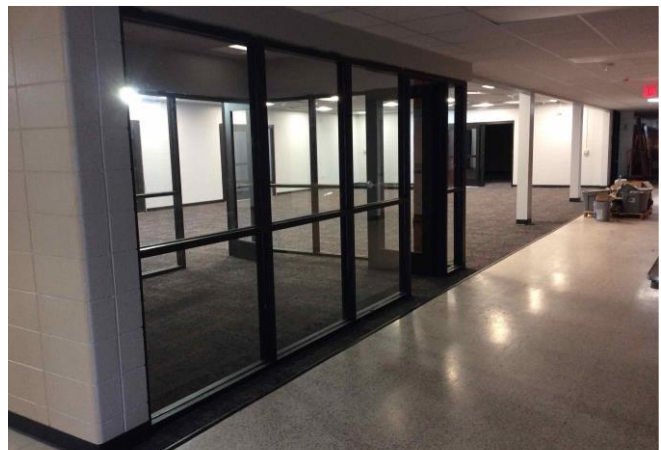
Activity Room



Main Office/Reception



Tech Ed Room Sinks



High School Collaboration

Update

Carpet got installed in the High School collaboration and main entrance/reception. Polished concrete flooring continues. Ceiling grid and tiles were installed in various areas and continues to make progress. Doors continue to be installed around the school and finishes continue to make progress. Casework continues to be installed. Woods room equipment was delivered and set up and the sinks were installed. Concrete was poured outside the fitness center. Finishes made progress at the Elementary school and cleaning began.

About Hoffman

Hoffman Planning, Design & Construction, Inc. is an integrated Total Project Management firm based in Appleton, Wisconsin. We partner with our clients to create innovative designs and build high quality, functional, attractive, energy efficient facilities at costs at or below projects delivered using traditional design and construction methods. Currently in our fifth generation of leadership, Hoffman continues to deliver the same expert service and superior value our clients have come to appreciate.